

B24 Surface mounted h., high profile, IP65

Double locking lever m.,2 entries M32

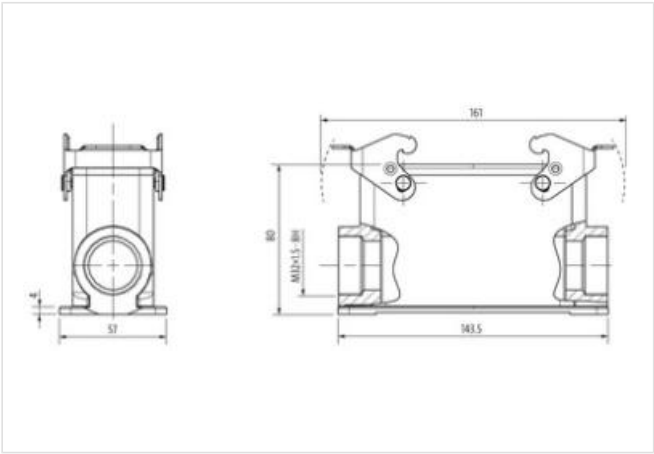
B24
Surface mounted housing (high)
Double locking lever
IP65
Technical data will be only guaranteed with Murrelektronik components.

Link to Product

Illustration



Product may differ from Image



Commercial data

ECLASS-6.0	27143424
ECLASS-6.1	27261203
ECLASS-7.0	27440202
ECLASS-8.0	27440202
ECLASS-9.0	27440202
ECLASS-10.1	27440202
ECLASS-11.1	27440202
ECLASS-12.0	27440202
ETIM-5.0	EC000437
customs tariff number	85389099
GTIN	4048879646857
Packaging unit	1

Installation

Cable outlet	double-sided
--------------	--------------

Installation | Connection

Mounting set	M32
Mating cycles min.	500

Device protection | Electrical

Degree of protection (EN IEC 60529)	IP65
Additional condition protection degree	inserted, locked, with screw connection

Mechanical data

Housing type	Surface mounted housing
--------------	-------------------------

Mechanical data | Material data

Coating housing	powder-coated
-----------------	---------------

Coating locking	verzinkt
-----------------	----------

Material gasket	NBR
-----------------	-----

Material housing	Aluminum die casting
------------------	----------------------

Locking material	Steel
------------------	-------

Mechanical data | Mounting data

Size	B24
------	-----

Height	80 mm
--------	-------

Width	57 mm
-------	-------

Depth	143,5 mm
-------	----------

Looking techniques	Double locking lever
--------------------	----------------------

Environmental characteristics | Climatic

Operating temperature min.	-40 °C
----------------------------	--------

Operating temperature max.	100 °C
----------------------------	--------

Climatic category (EN IEC 60068-1)	40/100/21
------------------------------------	-----------