

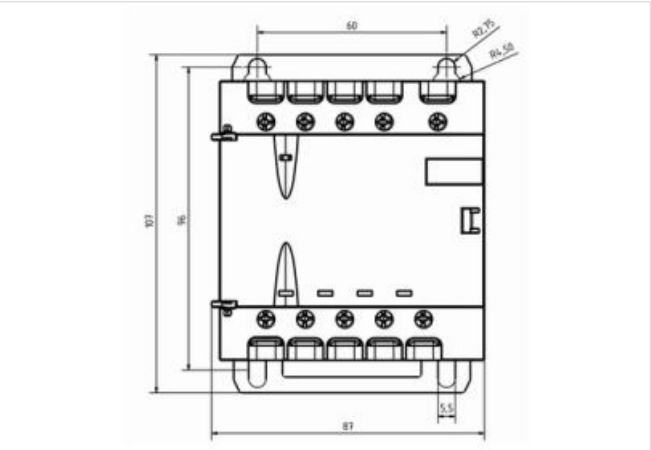
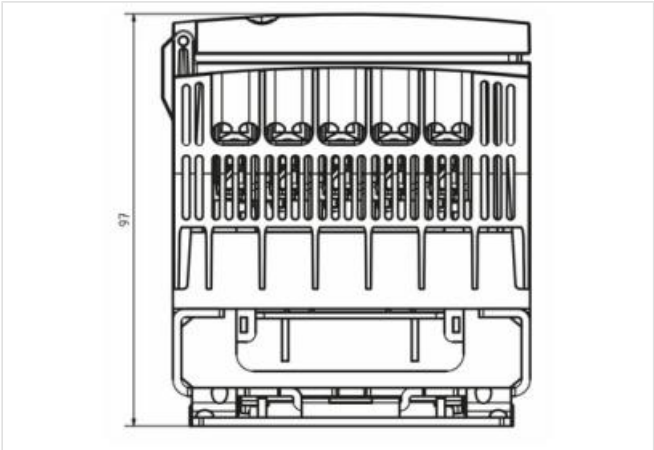
MTL 1-PHASE SAFETY TRANSFORMER

P: 25VA IN: 230/400VAC +/- 15VAC OUT: 2x24VAC

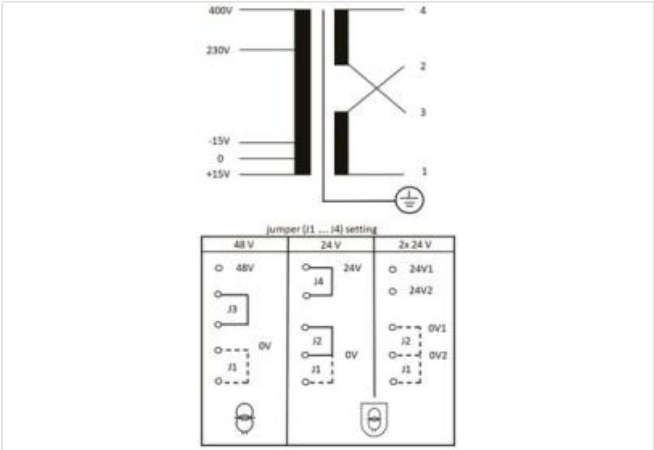
The MTL series comprises single-phase safety transformers/isolating transformers of the protection class I and protection degree IP20 with double insulation between the primary and secondary windings for general use in industrial applications.

Link to Product

Illustration



Product may differ from Image



Commercial data	
ECLASS-6.0	27031302
ECLASS-7.0	27031302
ECLASS-8.0	27031302
ECLASS-9.0	27031302
ETIM-5.0	EC002486
customs tariff number	85043180
GTIN	4048879078351

Packaging unit 1

Electrical data | Supply

Power frequency 50/60 Hz

Electrical data | Input

Input voltage 1 AC	230 V
Input voltage 2 AC	400 V
Input current at input voltage 1 AC	0,18 A
Input current at input voltage 2 AC	0,1 A
Inrush current at input voltage 1	2,6 A
Inrush current at input voltage 2	1,5 A
Short-circuit current at input voltage 1	1,3 A
Short-circuit current at input voltage 2	0,75 A

Electrical data | Output

Output voltage	1 × 24 / 1 × 48 / 2 × 24 V AC
Output voltage AC 1	48 V
Output voltage AC 2	24 V

Mechanical data | Mounting data

Mounting method	screwed, geschnappt
Suitable for mounting type	Tragschiene TH35-15, Schlüssellochtaufhängung, (EN 60715)
Mounting dimension a	96 mm
Mounting dimension b	60 mm
Mounting dimension c	2,75 mm
Height	107 mm
Width	87 mm
Depth	97 mm
Diameter bore	2,75 mm

Environmental characteristics | Climatic

Ambient temperature min.	-20 °C
Ambient temperature max.	60 °C
Operating temperature min.	-20 °C
Operating temperature max.	60 °C
Storage temperature min.	-30 °C
Storage temperature max.	80 °C

Conformity

Product standard	EN 61558-2-4, EN 61558-2-6, EN 62041, EN 61558-1
EMC	2014/30/EU

Connection type 2

Connection	Screw terminals SK
Family construction form	terminal
Gender	female
No. of poles	5
PIN 1	+ 15 V
PIN 3	- 15 V
PIN 4	230 V
PIN 5	400 V
Connection	Screw terminals SK
Family construction form	terminal
Gender	female
No. of poles	5
PIN 1	PE
PIN 2	1

PIN 3	2
PIN 4	3
PIN 5	4