

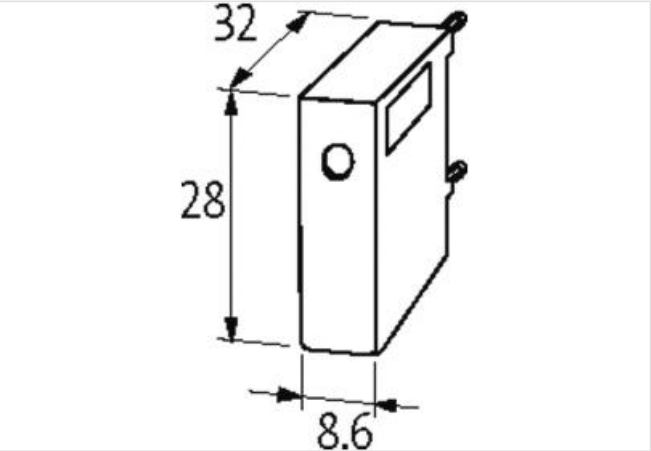
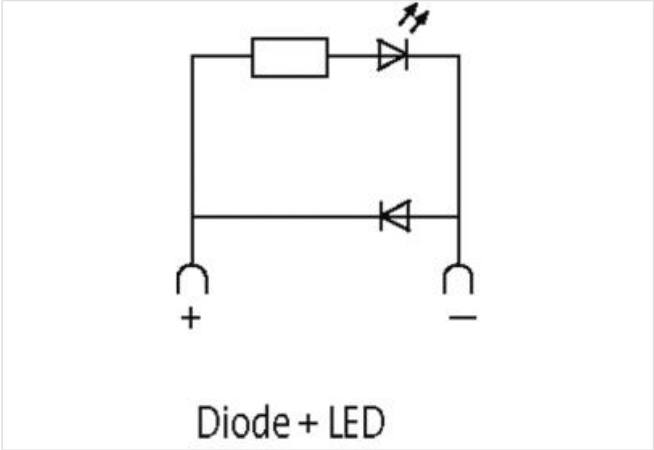
SIEMENS CONTACTOR SUPPRESSOR

Diode and LED, 24VDC

24 V DC
Diode + LED

[Link to Product](#)

Illustration



Product may differ from Image



| Commercial data | |
|-----------------|----------|
| ECLASS-6.0 | 27371013 |
| ECLASS-6.1 | 27371013 |
| ECLASS-7.0 | 27371013 |
| ECLASS-8.0 | 27371013 |
| ECLASS-9.0 | 27371013 |
| ECLASS-10.1 | 27371013 |
| ECLASS-11.1 | 27371013 |
| ECLASS-12.0 | 27371013 |

| | |
|-----------------------|---------------|
| ETIM-5.0 | EC002498 |
| customs tariff number | 85363010 |
| GTIN | 4048879017633 |
| Packaging unit | 1 |

Compatibility | Compatible with

| | |
|------------------------|---|
| Appropriate contactors | 3 RH 1/11; 3 RT 1/3 RH1; 3 RT 1/10.15...10.17 |
|------------------------|---|

Electrical data | Input

| | |
|-----------------------|------|
| Input voltage DC min. | 12 V |
| Input voltage DC max. | 24 V |

Mechanical data | Mounting data

| | |
|--------|--------|
| Height | 28 mm |
| Width | 8,6 mm |
| Depth | 32 mm |