

MEF EMC-FILTER 1-PHASE 2-STAGE

I:10A U:250 VAC/300 VDC snap on

Current: 10 A

DIN-rail mountable

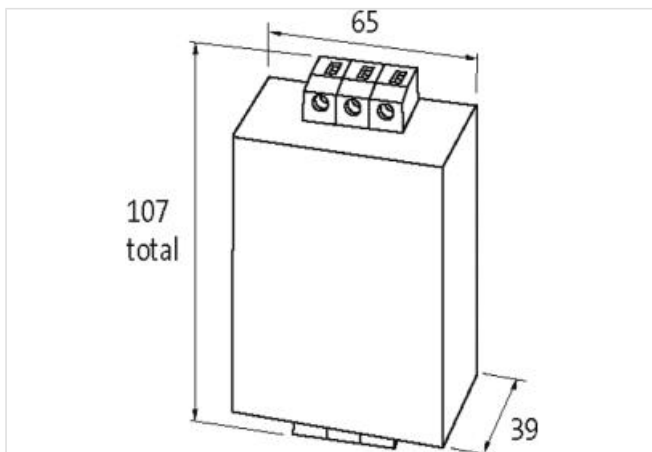
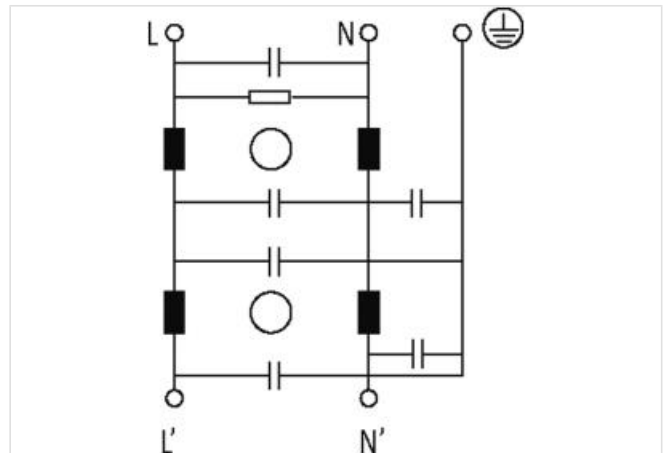
Attenuation curves on request.

against symmetrical interferences

The single phase 2-stage EMC filters MEF 1/2 are used in the range 0.1...30 MHz to suppress cable carried interference on mains and control cables. The best filter performance is achieved by using short connection wires (suggestion: earth connection < 10 cm) and the largest possible diameter. The EMC filters work bi-directionally (in both directions). The filters are for demanding applications. The filters are designed for use with fixed modules. One step of the filter is always for the suppression of asymmetrical interferences (magnetically compensated suppression). The second step is, dependant on application for symmetrical or asymmetrical interferences.

[Link to Product](#)

Illustration



Product may differ from Image



General product information

The information in this Product-PDF has been compiled with the utmost care.

Liability for the correctness completeness and topicality of the information is restricted to gross negligence. Version: 2024-05-18

Murrelektronik Canada | 2840 Argentinia Rd Unit #9 | L5N 8G4 Mississauga, ON | Fon +1 905-362-2211 | Fax +1 905-362-2101 | shop@murr.ca | shop.murr.ca

| | |
|--|---|
| Suitable for application range | Devices with fast switching frequency and high repetition rate, Power Supply Units, before transformers, for frequency converters, in DC networks |
| Suitable for type of fault | asymmetrical interferences |
| Commercial data | |
| ECLASS-6.0 | 27130806 |
| ECLASS-6.1 | 27420201 |
| ECLASS-7.0 | 27420290 |
| ECLASS-8.0 | 27420290 |
| ECLASS-9.0 | 27420290 |
| ECLASS-10.1 | 27420208 |
| ECLASS-11.1 | 27420208 |
| ECLASS-12.0 | 27420208 |
| ETIM-5.0 | EC002498 |
| customs tariff number | 85363010 |
| GTIN | 4048879029308 |
| Packaging unit | 1 |
| Electrical data | |
| Leakage current max. | 5 mA @ 250 V AC, 50 Hz |
| Electrical data Supply | |
| Power frequency | 50 ... 60 Hz |
| Operating voltage AC max. | 250 V |
| Operating voltage DC max. | 300 V |
| Electrical data Output | |
| Overload current | 18× (IN t) max. 0.5 ms; 1.5× (IN t) max. 1 min. (1× per hour) |
| Installation | |
| Connection cross-section solid min. | 0,2 mm ² |
| Connection cross-section solid max. | 6 mm ² |
| Connection cross-section stranded/fine-stranded min. | 0,2 mm ² |
| Connection cross-section stranded/fine-stranded max. | 4 mm ² |
| AWG number solid min. | 24 |
| AWG number solid max. | 9 |
| AWG number stranded/fine stranded min. | 24 |
| AWG number stranded/fine stranded max. | 11 |
| Device protection Electrical | |
| Duration insulation test voltage | 2 s |
| Insulation test voltage L-L | 2,1 kV |
| Insulation test voltage L-N | 2,7 kV |
| Mechanical data Mounting data | |
| Mounting method | geschnappt |
| Suitable for mounting type | Mounting rail TH35, (EN 60715) |
| Height | 107 mm |
| Width | 56 mm |
| Depth | 39 mm |
| Environmental characteristics Climatic | |
| Climatic category (EN IEC 60068-1) | 25/085/21 |
| Connection type 3 | |
| Connection | Screw terminals SK |
| Family construction form | terminal |
| Gender | female |

| | |
|--------------------------|--------------------|
| Color contact carrier | green-yellow |
| No. of poles | 1 |
| PIN 1 | PE |
| Connection | Screw terminals SK |
| Family construction form | terminal |
| Color contact carrier | gray |
| No. of poles | 2 |
| PIN 1 | L |
| PIN 2 | N |
| Connection | Screw terminals SK |
| Family construction form | terminal |
| Color contact carrier | gray |
| No. of poles | 2 |
| PIN 1 | L' |
| PIN 2 | N' |